

Stock Code: **MHU20012510-DP**

MHU20012510-DP 2 x 1.25 x 254 Ultra

STAMPING DETAILS:

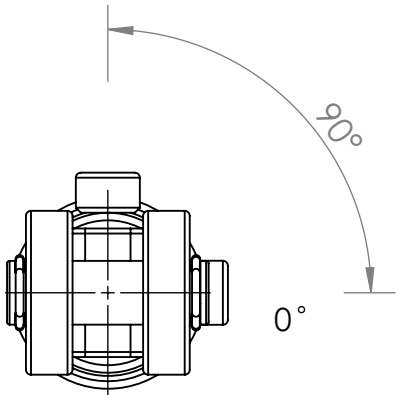
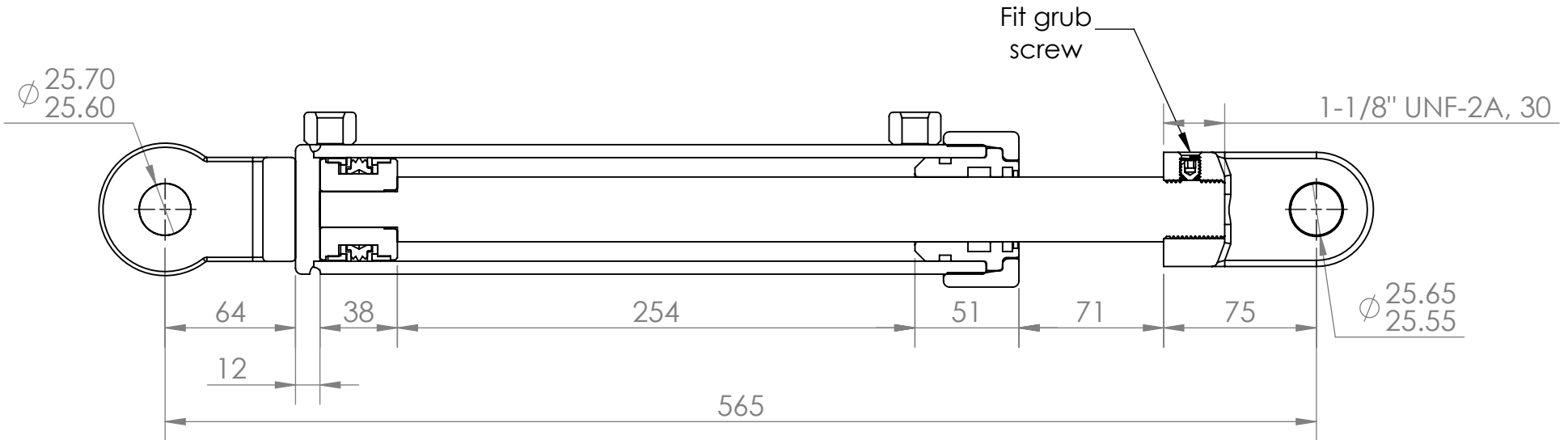
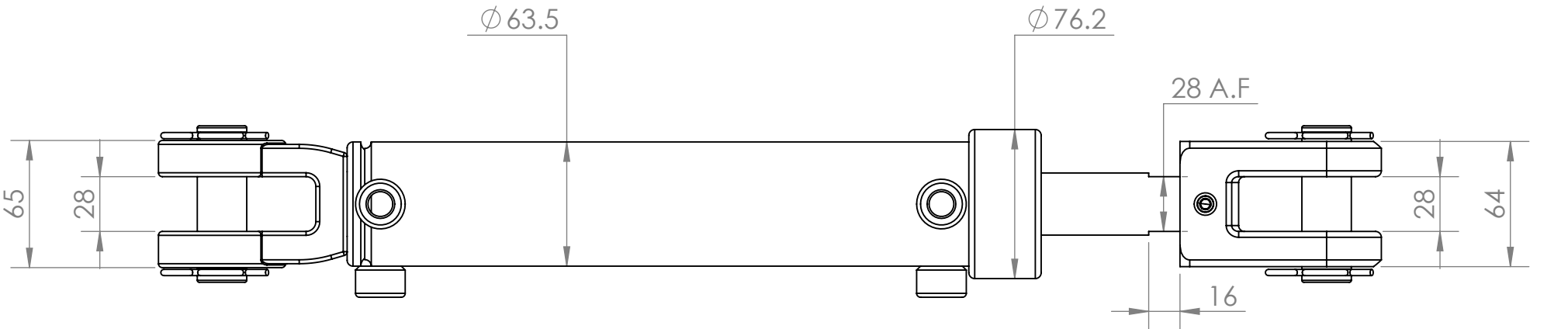
Stamping Type:		Pin
MOTUS	XXXXX	"X" Refers to MOTUS 5 digit build number
MHU20012510-DP		Customer stamping text (if applicable)

Company:	C&M	
Cylinder Name: (if applicable)	MHU20012510-DP	
Cylinder Type:	Ultra	DA
Operating Pressure:	4000 PSI	
Safety Rating:	2.5 : 1	
Weight:	10.84	kg

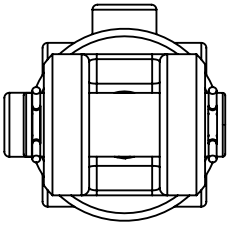
Motus Decal:	Yes	
Paint/Finish:	Black	
Seal Kit :	6106837	

Bore Dia / Finished Length	Ø 2"	330 mm
Wall Thickness :	1/4	
Shaft Dia / Finished Length	Ø 1.25"	444 mm
Material :	1045	
Piston Thread Details:	Ø 0.75"	38 mm

BASE	SPEAR
Mount: Clevis 1" Pin x 28 Gap CL10 Part No: 6006287	Mount: Threaded Clevis CL10-28-75 1-1/8" Thread Part No: 6007510
Pin Size Ø : 1" Bush Type: - L Bore: No Bush Size: - Base Bearing: -	Pin Size Ø : 1" Bush Type: - L Bore: No Bush Size: - Shaft Bearing : -
Grease Nipple: N/A	Grease Nipple: N/A
Port: 9/16 Female UNO -6 (x2)	Port: 9/16 Female UNO -6 (x2)
Orientation: 0 & 90	Orientation: 0 & 90
Drill Size: 5 mm	Drill Size: 5 mm
Drill Distance: 8 mm	Drill Distance: 35 mm



Base View



Front View

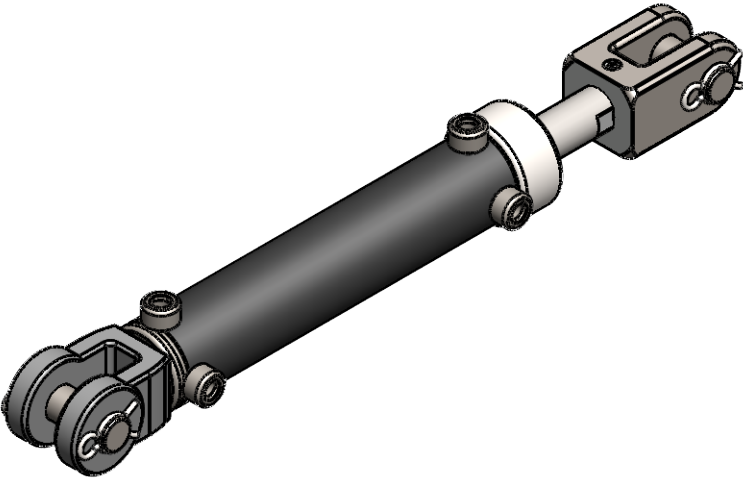
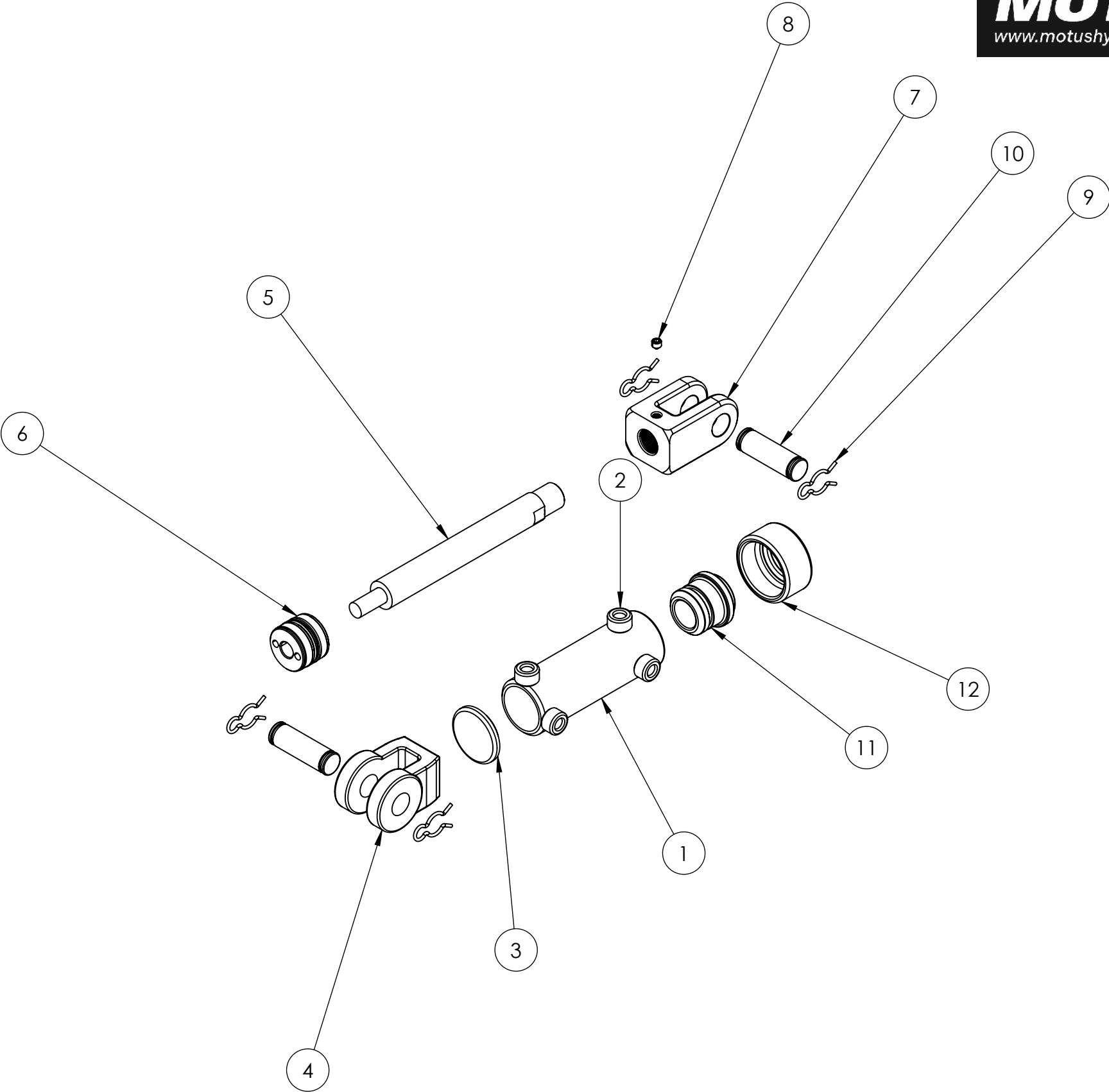
Drawing Approval (Customer)		
Name:	Signature:	Date:

Stroke :	254 ±3 mm
Closed Centres :	565 ±3 mm
Open Centres :	819 ±3 mm

Special Instructions:
Fit pins & clips
Fit metal plugs in ports
680 Loctite on clevis and grub screw

BUILD NUMBER:	
Sales Order Number:	
Invoice Number:	
Customer Order Number:	
Order Date:	
Date of Dispatch:	
Quantity:	
Multiple order:	of:

ITEM NO.	PART NUMBER	DESCRIPTION	QTY.
1	BR2.0	2" Barrel	1
2	6006856-1	9/16 -6 UNO Port	4
3	6006536	BF200 Flat Base	1
4	6006287	CL-10 Clevis	1
5	SP1.25	1.25" Shaft	1
6	6006220-1	WR200 Piston	1
7	6007510	CL1.0-28-75 Threaded Clevis-1-1/8" UNF	1
8	9009427	3/8 UNF Grub Screw	1
9	6006720	Clip to suit 1" Pin	4
10	6007086	1.0x80 ZP pin	2
11	6007465	UH200125 Ultra Head	1
12	6008028	UC200 2" Ultra Cap	1



Note:

- All imperial threads are machined to 2A, 2B specification
- All metric threads are machined to 6g, 6H specification
- All pin holes machined to D9 tolerance unless specified otherwise
- All machine surface finishes are 3.2µm Ra
- Close/Open centres to ±3mm tolerance

1	Initial release	10-01-2023	TQ	-
REV.	DESCRIPTION	DATE	DRAWN	APPROVED
REVISIONS				